



NT200R Plus ADSL Modem/Router

Application Note : Firewall & IP Filtering Configuration

Document No. 560-0005-01
Revision 01
December 2015
Extreme Copper, Inc. Proprietary and Confidential

TABLE OF CONTENTS

GENERAL INFORMATION.....	3
FIREWALL CONFIGURATION.....	4
IP FILTERING CONFIGURATION	5
INCOMING IP FILTERING CONFIGURATION	6
OUTGOING IP FILTERING CONFIGURATION.....	8
EXAMPLE: ADD IP FILTER, INCOMING	10
SERVICE AND UNRESOLVED PROBLEMS	11

GENERAL INFORMATION

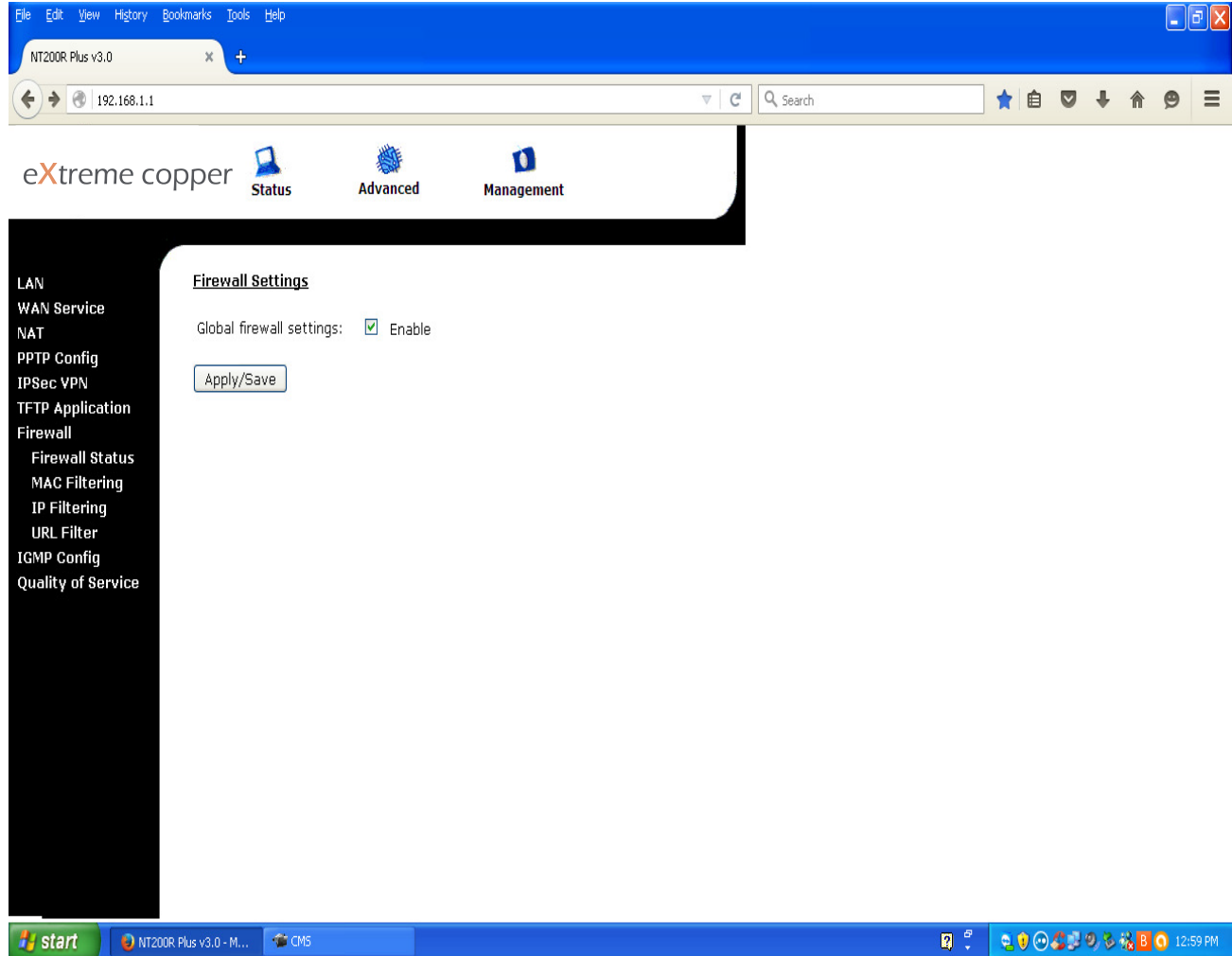
The Extreme Copper, Inc. NT200R Plus can be configured for Global Firewall Protection, Incoming and Outgoing IP Filtering per this application note.

FIREWALL CONFIGURATION

Select **Advanced** from the options across the top of the screen.

Then, select **Firewall** from the options on left side of the screen.

Click on the **Enable** box to the right of Global Firewall Settings, click on **Apply/Save**.



IP FILTERING CONFIGURATION

Select **IP Filtering** from the options on left side of the screen.

The screenshot shows a web browser window with the address bar displaying "192.168.1.1". The browser's address bar also shows "NT200R Plus v3.0" and a plus sign for additional tabs. The browser's menu bar includes "File", "Edit", "View", "History", "Bookmarks", "Tools", and "Help".

The main content area of the browser displays the eXtreme copper logo and three navigation icons: "Status", "Advanced", and "Management".

On the left side of the interface, there is a dark sidebar with a list of configuration options:

- LAN
- WAN Service
- NAT
- PPTP Config
- IPSec VPN
- TFTP Application
- Firewall
 - Firewall Status
 - MAC Filtering
 - IP Filtering**
 - URL Filter
- IGMP Config
- Quality of Service

The main content area is titled "Firewall Settings" and contains the following configuration:

Global firewall settings: Enable

Below this is an "Apply/Save" button.

The browser's status bar at the bottom shows the URL "192.168.1.1/scipflt.cmd?action=view" and the Windows taskbar with the Start button and several open applications: "NT200R Plus v3.0 - M...", "CMS", and "C:\Documents and Se...".

INCOMING IP FILTERING CONFIGURATION

The next screen will appear.

To setup Incoming IP Filtering: Click on the **Enable** box to the right of Incoming Filtering Enable.

Click on **Apply**.

The screenshot shows a web browser window with the address bar set to 192.168.1.1. The page title is "eXtreme copper" and the navigation menu includes "Status", "Advanced", and "Management". The main content area is titled "Incoming IP Filtering Setup" and contains the following text:

When the firewall is enabled on a WAN or LAN interface, all incoming traffic is **BLOCKED**. However, some IP traffic can be **ACCEPTED** by setting up filters.

Choose Add or Remove to configure incoming IP filters.

Incoming IP Filtering: Enable

Outgoing IP Filtering Setup

By default, all outgoing IP traffic from LAN is allowed, but some IP traffic can be **BLOCKED** by setting up filters.

Choose Add or Remove to configure outgoing IP filters.

Outgoing IP Filtering : Enable

The Windows taskbar at the bottom shows the Start button and several open applications: "NT200R Plus v3.0 - M...", "CMS", and "C:\Documents and Se...".

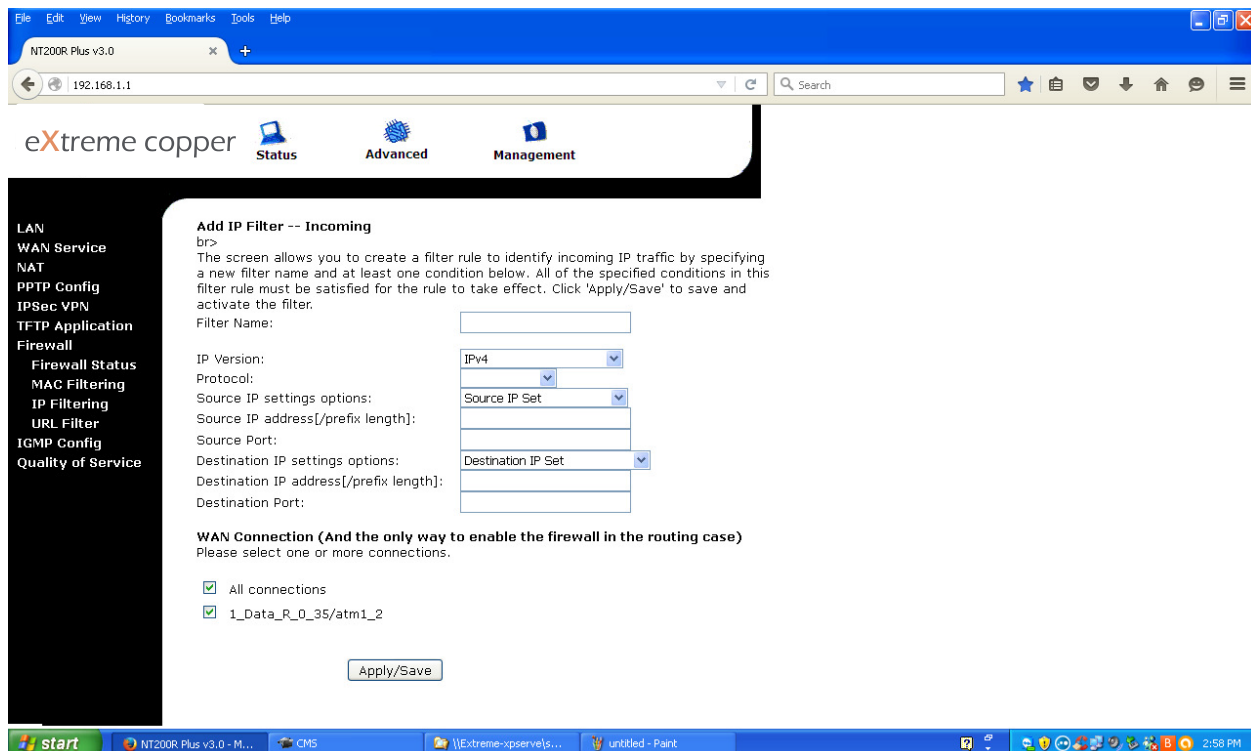
Additional information will appear.

Click on the **Add** tab underneath Filter Name.



Additional field boxes will appear.

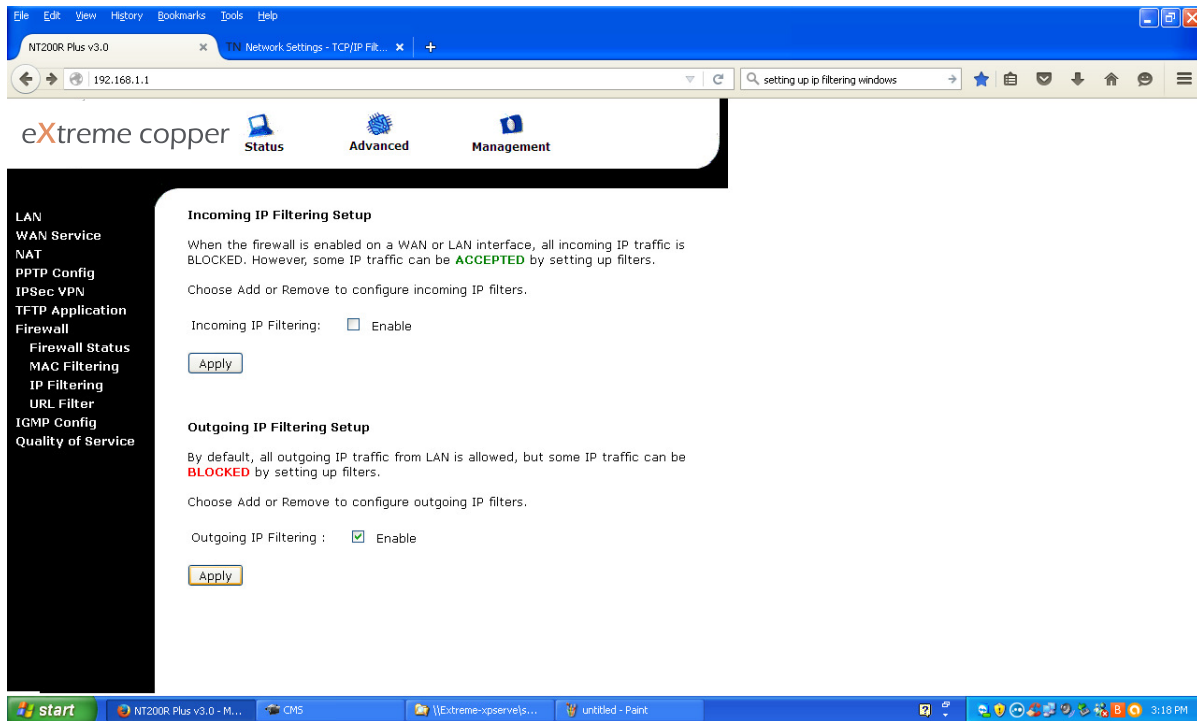
Enter your rules for Incoming IP Filtering into the field boxes (also see EXAMPLE ADD IP FILTER, INCOMING on page 10).



OUTGOING IP FILTERING CONFIGURATION

To setup Outgoing IP Filtering: Click on the **Enable** box to the right of Outgoing Filtering Enable.

Click on **Apply**.



Additional information will appear.

Click on the **Add** underneath Filter Name for Outgoing IP Filtering.

Additional field boxes will appear.

