

EC-NE400 Network Extender

Hardened G.SHDSL.bis Network Extender

KEY FEATURES:

- Extending Ethernet to first mile sites over existing traffic, transportation, and enterprise copper infrastructure
- Point-to-Point
- Low cost plug and play solution for extending high-speed communications over long distances using a single twisted pair of wire
- Extends the distance of 10/100 Ethernet/Cat 5 video, audio, and control systems up to 22,000 feet
- Simultaneously supports video and high-speed data services
- Does not require PC or Software setup
- Easily accommodates Access Control System data or data streams from serial data to TCP/IP converters for security, building controls, or plant process equipment
- Inter-modem Data Link allows LT-400 management of remote end (NT-400)



DESCRIPTION:

The NE400 Network Extender is designed to provide bonded high-speed Ethernet in the First Mile services using g.SHDSL.bis on existing copper infrastructure. It is a bridge-mode modem that delivers Ethernet services with symmetrical bandwidth at rates up to 15.3 Mbps/ pair.

The NE400 ensures high reliability, low OPx, and maximum throughput. EFM copper technology enables the delivery of higher bandwidth at longer distances over copper pairs – an excellent alternative where fiber is not economically feasible and other technology such as T1 or E1 is not able to meet bandwidth requirements.

This "Ethernet-pure" solution provides a seamless integration today for tomorrow's networks. The NE400 extends the reach of Ethernet services using copper pairs for an aggregate bandwidth of over 15Mbps (TC-PAM 128) using only 1 pair over long distances. The rate is adaptive depending on the length and quality of the line; rates can be fixed if desired.

Designed using standards-based EFM technology (2BASE-TL), deployment of Ethernet services using the NE400 is quick and simple. Typically used in point-to-point and drop/continue connections between offices, the NE400 provides symmetrical connectivity that is ideal for enterprise to deliver business-class Ethernet service.

User-friendly Ethernet makes it possible to save unnecessary truck rolls and minimize training costs leading to reduced risk and quick ROI.

The NE400 operates in EFM mode. It is designed to deliver business class Ethernet Service. The NE400 management is by user-friendly CLI. Firmware upgrade via inter-modem data link. Local monitoring is possible using front panel access port or remotely via the web using optional Telnet or SSH.

STANDARDS:

- ITU-T G.991.2
- IEEE 802.3ah PAF
- IEEE 802.3 10/100Base-T

INTERFACE:

- 1 – WAN (G.SHDSL.bis) Port (1-pair)
- 1 – LAN Port
- 1 – Console Port
- 1 – Power Input Jack

PROTOCOLS:

Up to 2K MAC Address learning bridge

LAN FEATURES:

- 10/100BASE-T auto-negotiation & sensing
- Auto MDI/MDI-X

WAN FEATURES:

- ITU-T G.991.2
- 2BASE-TL
- Support of Annex A, Annex B , Annex AF & Annex BG

DATA RATE CONFIGURATIONS:

- N x 64Kbps using TC-PAM 16/32
5.696Mbps (1-pair)
- N x 64Kbps using TC-PAM 64/128
15.296Mbps (1-pair)

MANAGEMENT:

- Easy to use CLI for quick local and remote management
- SNMP v1/v2 (RFC1157/1901/1905) agent and MIB II (RFC1213/1493) (optional)

ELECTRICAL:

- External AC power cube
- 90 to 240 VAC @ 47 to 63Hz.

- Internal 18-72 VDC
- 2 Watt

MECHANICAL:

- Height 1.5in (3.8cm)
- Depth 5.0in (12.6cm)
- Width 3.8in (9.6 cm)
- Metal enclosure with wall mount tabs
- DIN Rail (optional)

APPLICATIONS:

- Metro Ethernet Extensions
- Transparent LAN Services
- Fast Internet Access
- Leased Lines Replacement
- Point-to-Point (EFM Extender)
- Cellular/WiFi Backhaul (to the RAN, Core)

LED INDICATORS:

- Power
- Ethernet “Good Link”
- Ethernet “Activity”
- G.SHDSL “Sync”

ENVIRONMENT:

- Operating Temperature: -40°C ~ 74°C
- Operating Humidity: 98% (Non-Condensing)

CONNECTIONS:

- RJ45 for 2BaseTL Ethernet access
- RJ45 for G.SHDSL.bis access required

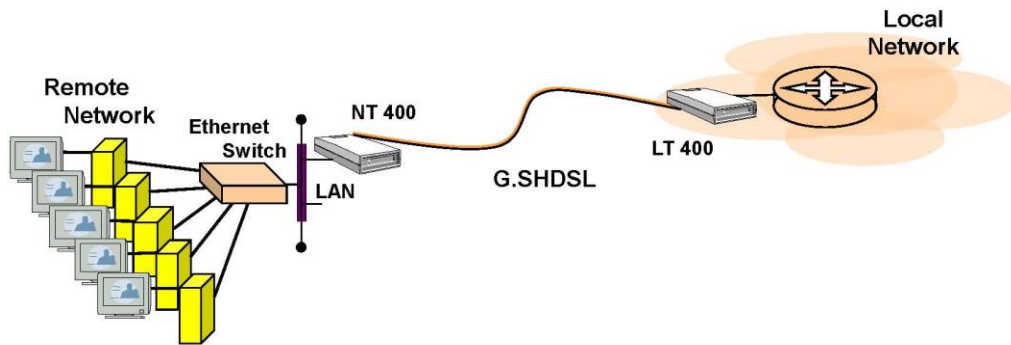
CERTIFICATIONS:

FCCA

WARRANTY:

2 Years-Applicable to design or manufacturing related product defects

Specifications are subject to change without notice.



eXtreme copper

Corporate Office
107 N. Reino Road
Suite 233
Newbury Park, CA 91320

Research & Development Center
2243 Agate Court
Unit E
Simi Valley, CA 93065

Contact Information
Phone: 818.230.2477
Fax: 818.292.8590
sales@extremecopper.com

www.extremecopper.com